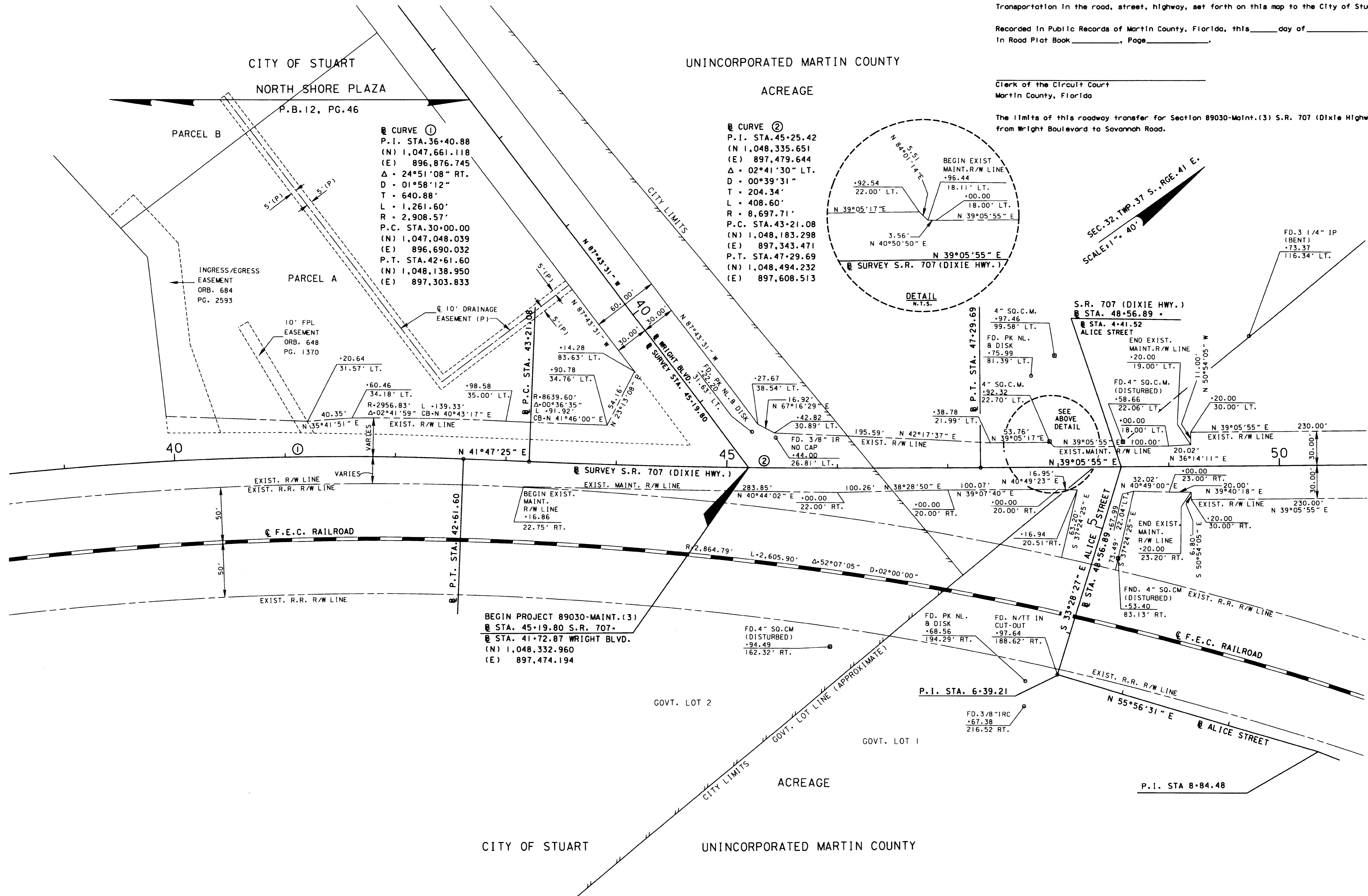


This right of way map when recorded is an instrument of conveyance, transferring in accordance with the Florida Statutes 337.29 all right, title, and interest of the Florida Department of Transportation in the road, street, highway, set forth on this map to the City of Stuart.

Recorded in Public Records of Martin County, Florida, this _____ day of _____, A.D. 2012, in Road Plat Book _____, Page _____.

Clerk of the Circuit Court
Martin County, Florida

The limits of this roadway transfer for Section 89030-Maint.(3) S.R. 707 (Dixie Highway) is from Wright Boulevard to Savannah Road.



THIS MAP IS NOT A SURVEY
FROM WRIGHT BLVD. TO SAVANNAH ROAD

SEE SHEET 1 FOR GENERAL NOTES, CERTIFICATIONS, LEGEND, ETC.

RIGHT OF WAY MAP	FLORIDA DEPARTMENT OF TRANSPORTATION SURVEYING AND MAPPING	APPROVED BY <i>[Signature]</i> DISTRICT SURVEYOR	DATE 08/03/12																						
		REVISION	BY	DATE	REVISION	BY	DATE	PRELIM	L.CEFOLIA	05/17/02	FED. PROJ.	N/A	SECTION 89030-MAINT.(3)	MAPS PREPARED BY:	LB* 696 KIMLEY-HORN AND ASSOCIATES	DATA SOURCE:	SEE SHEET 1	SCALE:	1" = 40'						
						FINAL	T.BROWN	07/31/12	STATE ROAD NO. 707 (DIXIE HIGHWAY)		MARTIN COUNTY	F.P. NO. N/A													

TIMS: /RWMAPPING/89030-MAINT3/rwtransfer03.dgn